



USADER



Apt 106 Crusader, 70 Chapeltown Street, Piccadilly East, Manchester, M1 2EW

NO ONWARD CHAIN

Jordan Fishwick are pleased to offer for sale this first floor 805sq ft two bed, two bath in an incredible 200-year-old mill restored by Capital & Centric in the city centre. With beautiful high ceilings, huge windows, and exposed brick and timber beams, Crusader is for people who value texture and space. This apartment offers an abundance of living space, with space for a 6 seater dining table, kitchen and a lovely big lounge area. At the heart of mill is a lush private garden complete with gas-fed BBQs and fire pits. Crusader is a real community where you know your neighbours. There is 24/7 concierge and lifts to all floors. It is also pet friendly, so your furry family members are welcome too.

Set in the mix of Manchester's emerging Piccadilly East neighbourhood, Crusader is minutes from the bars & cafés of Ancoats and Northern Quarter and less than a five-minute walk to Piccadilly Station.

Price £359,950

Viewing arrangements

Viewing strictly by appointment through the agent

245 Deansgate, Manchester, M3 4EN 0161 833 9499 opt 3

Entrance Hall

Engineered oak wooden flooring. Spotlights. Storage cupboards and washing machine.

Living Room/Kitchen

25'9" x 12'7"

Range of base units with worktop over. Integrated Liebherr fridge and freezer, Bosch dishwasher, Bosch cooker with induction hob and extractor over. Blanco stainless steel sink with chrome mixer tap. Under cupboard lighting.

TV/Telephone point. Wall mounted electric heater.

Engineered oak wooden flooring. Wooden beams.

Exposed brickwork.

Bedroom One

11'3" x 10'6"

Engineered oak wooden flooring. Wall light. Wall mounted electric heater. Access to en-suite.

En-suite

Tiled shower room with floating sink with mixer tap, low level W/C, double shower with rainhead shower. Heated towel rail. Vanity cupboard housing shaver point.

Bedroom Two

12'0" x 11'1"

Engineered oak wooden flooring. Wall light. Wall mounted electric heater.

Bathroom

Tiled bathroom with floating sink with mixer tap, low level W/C, double shower with rainhead shower. Heated towel rail. Vanity cupboard housing shaver point. Storage cupboard housing water tank.

Externally

Communal lifts to all floors. Concierge. Courtyard with BBQ/bluetooth speaker/wifi.

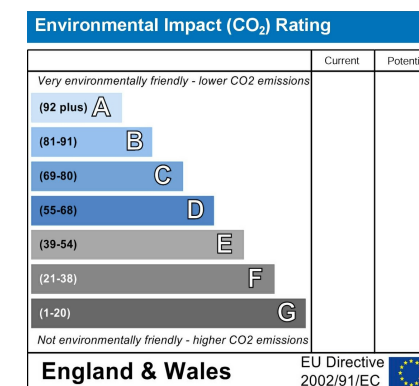
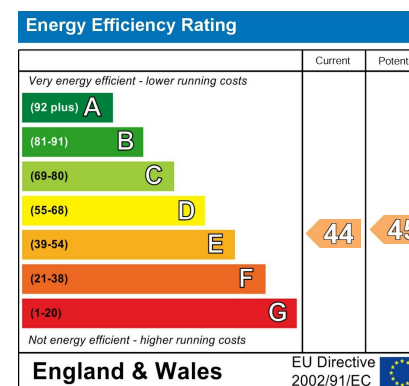
Additional Information

Service charges - £280 per month

Ground rent - £448 per annum Review every 5 years

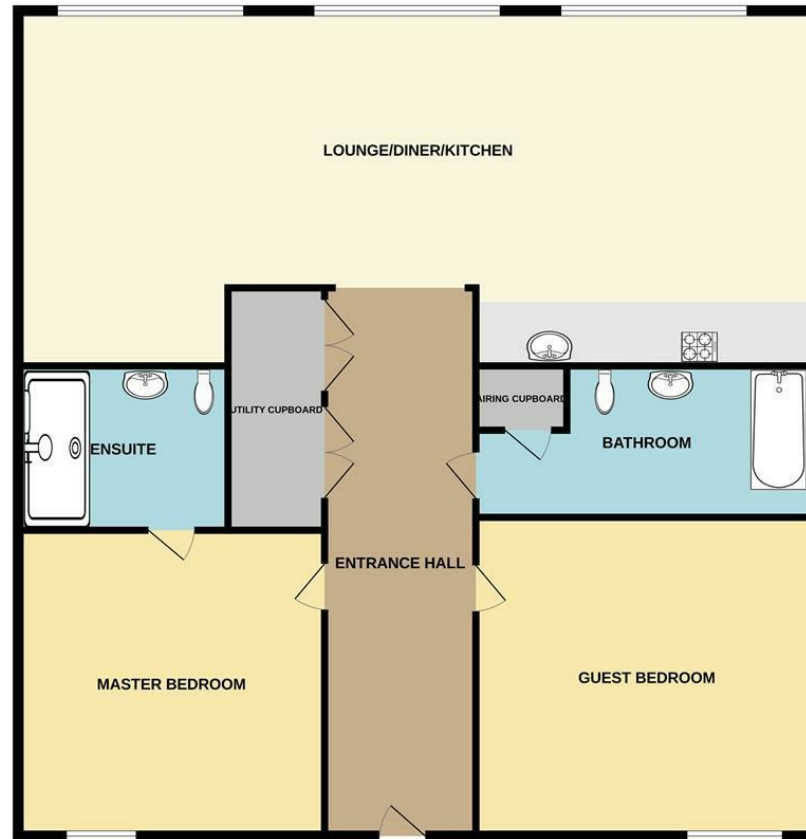
Lease is 250 years from 2015

Council Tax Band - E





GROUND FLOOR



Measurements are approximate. Not to scale. Illustrative purposes only.
Made with Metropix ©2024



These particulars are believed to be accurate but they are not guaranteed and do not form a contract. Neither Jordan Fishwick nor the vendor or lessor accept any responsibility in respect of these particulars, which are not intended to be statements or representations of fact and any intending purchaser or lessee must satisfy himself by inspection or otherwise as to the correctness of each of the statements contained in these particulars. Any floorplans on this brochure are for illustrative purposes only and are not necessarily to scale.

Offices at: Chorlton, Didsbury, Disley, Hale, Glossop, Macclesfield, Manchester Deansgate, Manchester Whitworth Street, New Mills, Sale, Wilmslow and Withington

245 Deansgate, Manchester, M3 4EN

0161 833 9499 opt 3

manchester@jordanfishwick.co.uk

www.jordanfishwick.co.uk

